



An

Frau Frederike Seib \_ Personalentwicklung

persönlich

- Auswertungsbericht für "212\_AV01\_emCI\_Online\_Schmohl" im SS21

Sehr geehrte/r Frederike Seib \_ Personalentwicklung,

in diesem Bericht finden Sie die Ergebnisse der automatisierten Auswertung der Evaluation Ihrer Lehrveranstaltung im SS21

"212\_AV01\_emCI\_Online\_Schmohl".

- Auf den folgenden Seiten finden Sie zunächst die detaillierten Ergebnisse (Häufigkeitsverteilungen, Mittelwerte), sowie eine Darstellung der Ergebnisse in Form einer Profillinie (Schnellüberblick). Am Ende finden sich die Antworten der Studierenden auf die offenen Fragen. Einzelne Fragen können bei Online-Befragungen ausgeblendet, d.h. für die Studierenden nicht sichtbar sein. Im Bericht werden diese Fragen dennoch mit dem Hinweis angezeigt, dass die Anzahl der Antworten für eine Auswertung zu gering ist.

Es wird empfohlen, die Evaluationsergebnisse den Studierenden in einer dem Format der Lehrveranstaltung entsprechend geeigneten Form vorzustellen und gegebenenfalls zu diskutieren.

Haben Sie Fragen zu Ihren Ergebnissen oder zur Evaluation allgemein? Wir stehen Ihnen gerne zur Verfügung!

Silke Köhler

E-Mail: [evaluation@hda.tu-darmstadt.de](mailto:evaluation@hda.tu-darmstadt.de)

- Telefon: (06151) 16-76674 bzw. -76675

Hochschuldidaktische  
Arbeitsstelle

Center for Educational  
Development and Technology

Lehrveranstaltungsevaluation

Silke Köhler, M.A.

Telefon: +49 6151 16 - 76675  
[evaluation@hda.tu-darmstadt.de](mailto:evaluation@hda.tu-darmstadt.de)

Hochschuldidaktische Arbeitsstelle  
AB Evaluation

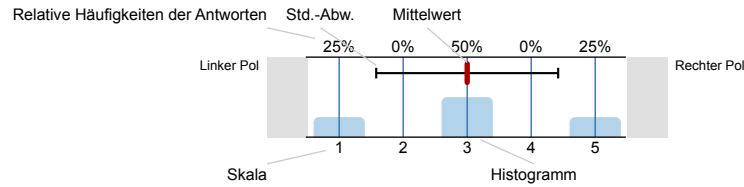
Hochschulstraße 1  
64289 Darmstadt



## Auswertungsteil der geschlossenen Fragen

### Legende

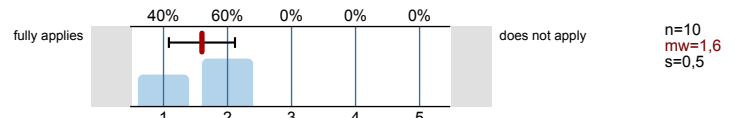
Frage-  
text



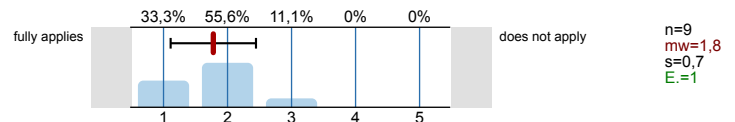
n=Anzahl  
mw=Mittelwert  
s=Std.-Abw.  
E.=Enthaltung

## 2. Content and acquired information

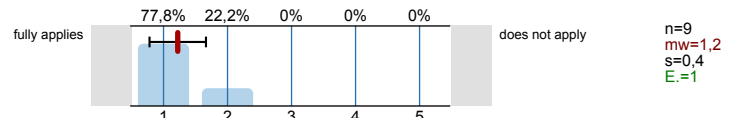
2.1) The course substantially contributed to improving my knowledge of this topic.



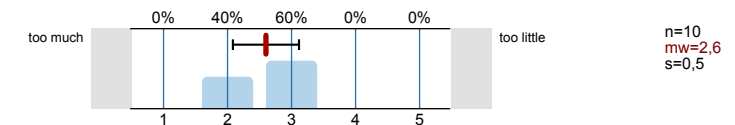
2.2) The contents corresponded with my previous expectations.



2.3) My questions and concerns were answered in the course.

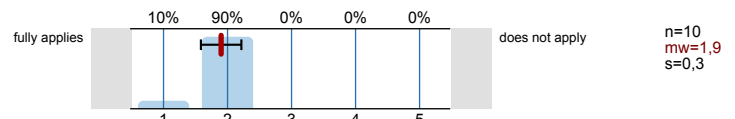


2.4) The amount of new information was:

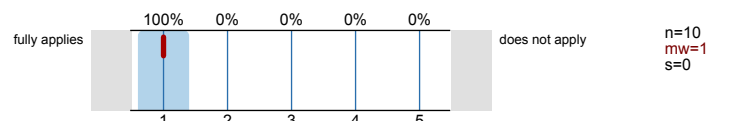


## 3. Arrangement of the course

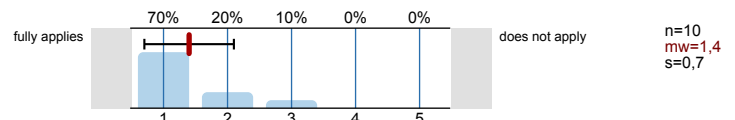
3.1) The course had a clear structure.



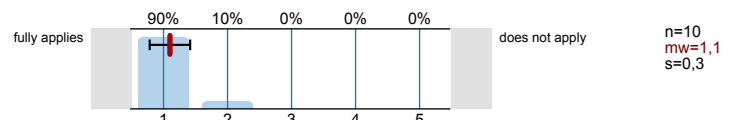
3.2) The working atmosphere in the course was positive.



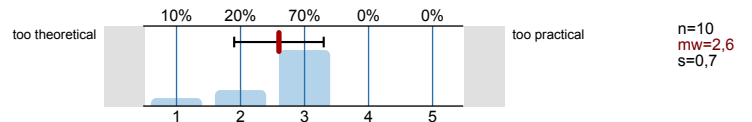
3.3) Different teaching methods were used in a reasonable manner.



3.4) The course material was useful.

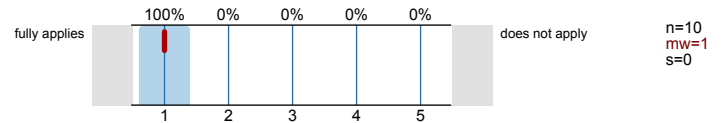


3.5) The character of the course was ...

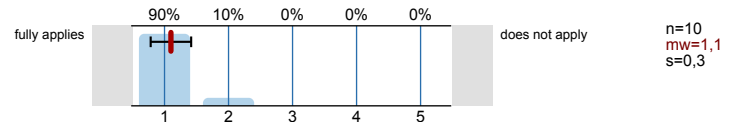


#### 4. Trainer

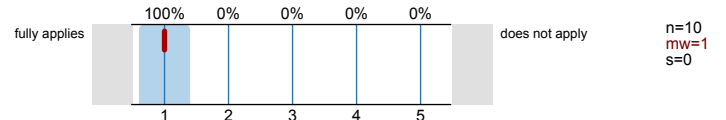
4.1) The trainer was competent.



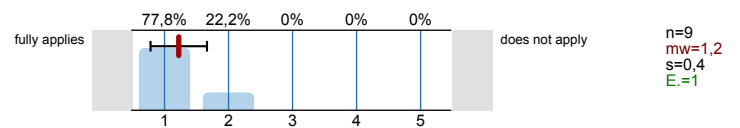
4.2) The trainer was well organized.



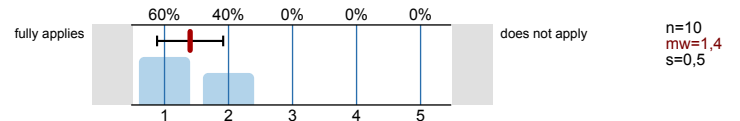
4.3) The trainer responded effectively to participants' comments and questions.



4.4) The trainer knew the specific culture of my academic field to a sufficient extent.

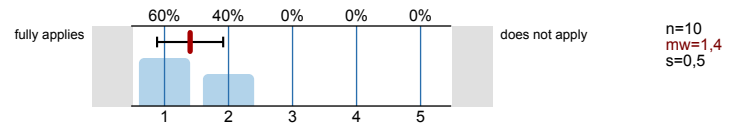


4.5) I would attend other courses offered by this trainer.

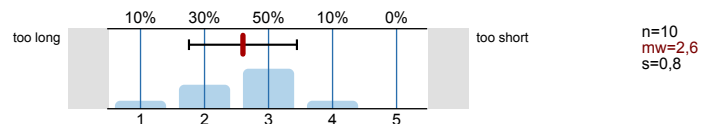


#### 5. Organisation

5.1) I am satisfied with the organisation of the course.

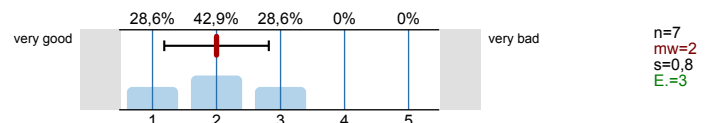


5.2) The length of the course was appropriate for the amount of content.

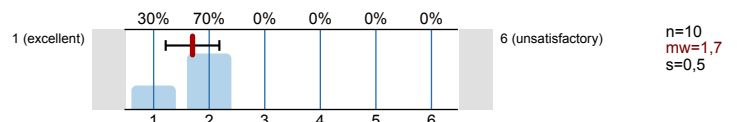


#### 6. Suggestions and overall assessment

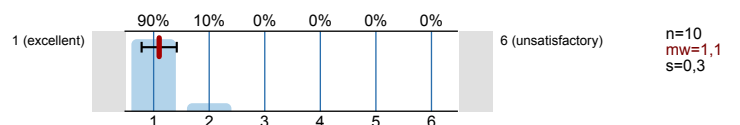
6.3) The ratio of costs and benefits was ...



6.4) Overall, how would you rate the course?



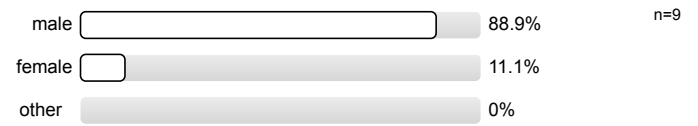
6.5) Overall, how would you rate the trainer?



#### 7. About you

---

7.1) I am...



---

7.3) I am assigned to ...



# Profillinie

Teilbereich: TU - Personalentwicklung  
 Name der/des Lehrenden: Frederike Seib \_ Personalentwicklung  
 Titel der Lehrveranstaltung: 212\_AV01\_emCI\_Online\_Schmohl  
 (Name der Umfrage)

Verwendete Werte in der Profillinie: Mittelwert

## 2. Content and acquired information

2.1) The course substantially contributed to improving my knowledge of this topic.	fully applies		does not apply	n=10	mw=1,6
2.2) The contents corresponded with my previous expectations.	fully applies		does not apply	n=9	mw=1,8
2.3) My questions and concerns were answered in the course.	fully applies		does not apply	n=9	mw=1,2
2.4) The amount of new information was:	too much		too little	n=10	mw=2,6

## 3. Arrangement of the course

3.1) The course had a clear structure.	fully applies		does not apply	n=10	mw=1,9
3.2) The working atmosphere in the course was positive.	fully applies		does not apply	n=10	mw=1,0
3.3) Different teaching methods were used in a reasonable manner.	fully applies		does not apply	n=10	mw=1,4
3.4) The course material was useful.	fully applies		does not apply	n=10	mw=1,1
3.5) The character of the course was ...	too theoretical		too practical	n=10	mw=2,6

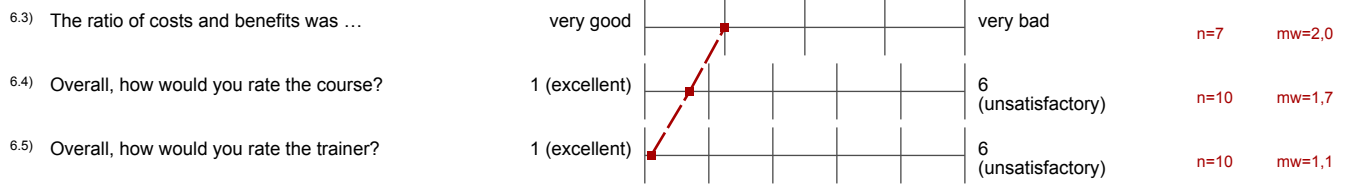
## 4. Trainer

4.1) The trainer was competent.	fully applies		does not apply	n=10	mw=1,0
4.2) The trainer was well organized.	fully applies		does not apply	n=10	mw=1,1
4.3) The trainer responded effectively to participants' comments and questions.	fully applies		does not apply	n=10	mw=1,0
4.4) The trainer knew the specific culture of my academic field to a sufficient extent.	fully applies		does not apply	n=9	mw=1,2
4.5) I would attend other courses offered by this trainer.	fully applies		does not apply	n=10	mw=1,4

## 5. Organisation

5.1) I am satisfied with the organisation of the course.	fully applies		does not apply	n=10	mw=1,4
5.2) The length of the course was appropriate for the amount of content.	too long		too short	n=10	mw=2,6

## 6. Suggestions and overall assessment



---

# Auswertungsteil der offenen Fragen

---

## 6. Suggestions and overall assessment

6.1) What did you like the most?

- The large scale overview of "Good Scientific Practice" even in unexpected subcategories like supervision.
- The trainer had lots of additionally content for further information
- The trainer was very motivated to address concerns and questions of the course participants.
- The workshop was VERY interactive and the trainer took his time to answer each of our questions in great detail, while linking to relevant literature. One of the best digital workshops I have ever had, making use of digital technologies (breakout sessions, screen sharing of participants, surveys, online material, PDFs). I think this workshop profuted a lot from being digital, as we were able to lookup stuff in the background or collaborate in an etherpad.
- interaktive Tools / Aktionen  
ausreichend Material

6.2) Comments and suggestions for improvement

a) regarding the course, b) regarding the trainer, c) regarding the Organisation, d) regarding the programme PEERStart

- Keep it up! You did this very well and took our input respectfully and responded in a knowledgeable way.
- Literaturphase am 2. Tag etwas zu lang
- The consequences of scientific misconduct was very long. I had the feeling that presenting it more concisely might improve the course, given that the participants might already have a comparatively high scientific standards.  
  
I would help to make the structure even more clear, the structure in the etherpad provided on the second day was very helpful in that direction (in the beginning it was hard to find a good place to put links and information in).
- This course would also be very good for professors and post docs, as they would need to repeat this standards as well.
- a) more concrete, illustrating examples of application of the course content  
b) sometimes intervening when discussions turned out to be too detailed/going on a tangent  
c) none  
d) n/a

## 7. About you

7.2) My nationality is ...

- German (5 Nennungen)
- german (2 Nennungen)